

890-960 MHz 90° V-POL
Model:PS900-14-90V
Electrical Data

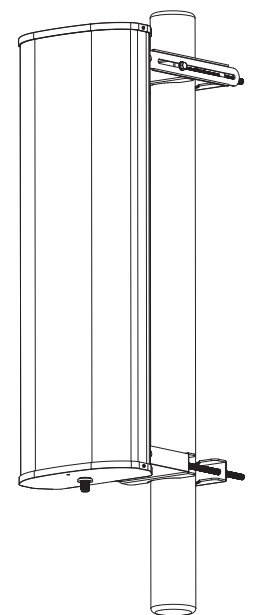
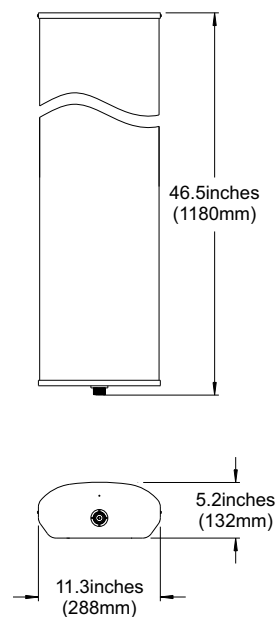
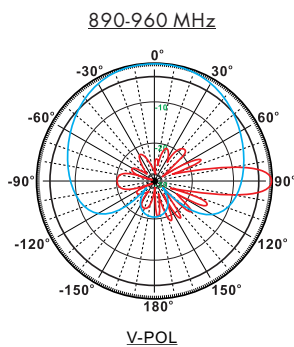
Frequency:	890-960 MHz
Gain:	14 dBi
VSWR:	<1.5:1
Polarization:	Vertical
Horizontal Beamwidth :	90°
Vertical Beamwidth:	13°
Nominal Impedance:	50 Ohms
F/B Ratio:	>20 dB
Max Input Power:	250 W
Lightning Protection:	DC Ground

Mechanical Data

Connector :	N Female
Dimensions:	1180*288*132mm
length*width*height	46.6*11.3*5.2in
Weight:	11.6kg/25.6lb
Radome Material:	UV Resistance PVC
Mounting Method:	Mast
Mast Size:	Ø50-Ø90mm
Rated Wind Velocity:	210km/h
Operating temperature:	-40~+65°C

Shipment Data

Packing Qty:	1pc/Carton
Carton Size:	1220*345*220mm
(length*width*height)	47.6*13.6*8.7in
Packing Weight:	13.4kg/29.5lb



Installation Guide

Model:PS900-14-90V

