

5150-5850 MHz HV-POL
Model:QB5158-13D-2N
Electrical Data

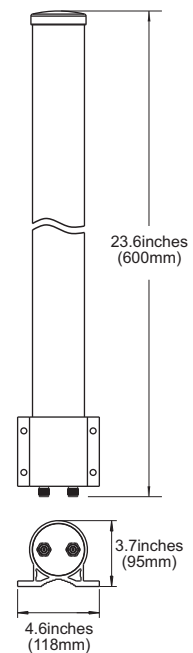
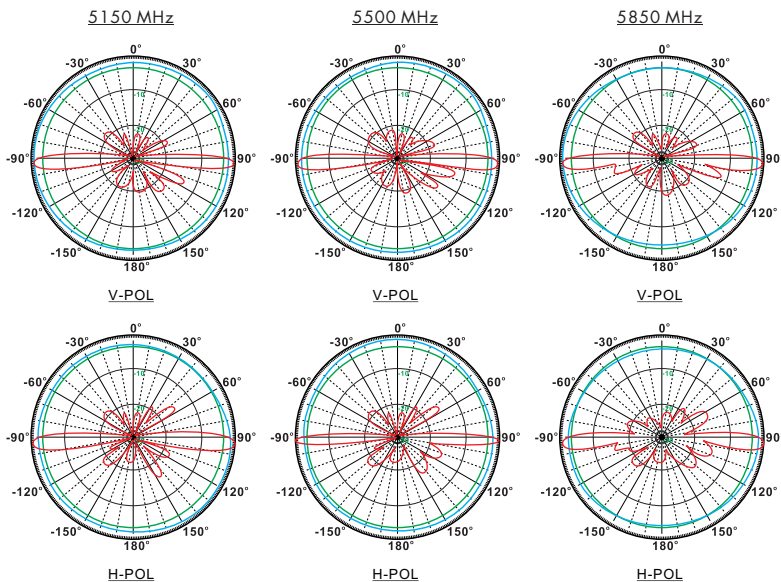
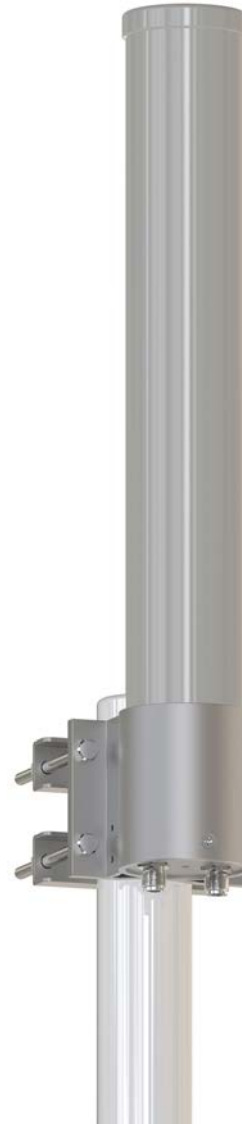
Frequency:	5150-5850 MHz		
	5150 MHz	5500 MHz	5850 MHz
Gain:	12.7 dBi	12.8 dBi	12.9 dBi
VSWR:	<2.0:1		
Polarization:	Horizontal and Vertical		
Horizontal Beamwidth :	360°		
Vertical Beamwidth:	8.3°	7.5°	7.9°
Isolation:	>30dB		
Cross-polar ratio:	>20dB		
Nominal Impedance:	50 Ohms		
Max Input Power:	100 W		
Lightning Protection:	DC Ground		

Mechanical Data

Connector :	2*N Female
Dimensions:	Ø84*600mm
(diameter*length)	Ø3.3*23.6in
Weight:	1.7kg/3.7lb
Radome Material:	UV Resistance PVC
Mounting Method:	Mast
Mast Size:	Ø40-Ø60mm
Rated Wind Velocity:	210km/h
Operating temperature:	-40~+65℃

Shipment Data

Packing Qty:	4pcs/Carton
Carton Size:	660*280*250mm
(length*width*height)	26.0*11.0*9.8in
Packing Weight:	8.7kg/19.2lb



Installation Guide

Model:QB5158-13D-2N

